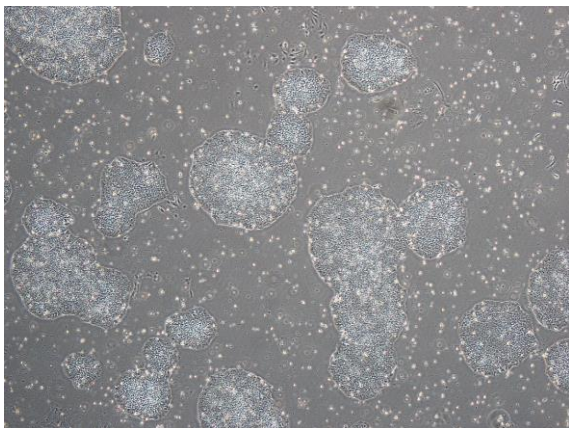


【 CiRA-j-1053 】 Morphology of iPSC colonies

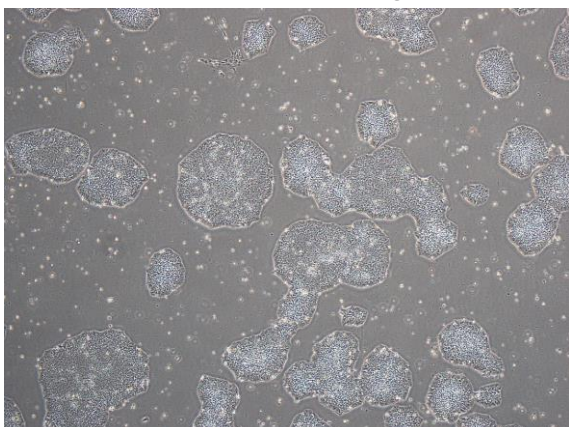
CiRA-j-1053-A: passage-2



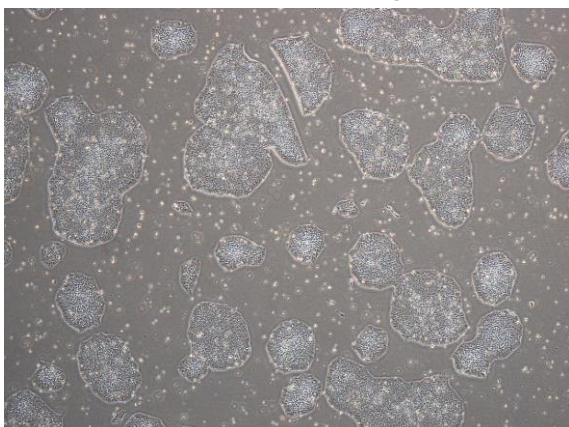
CiRA-j-1053-B: passage-2



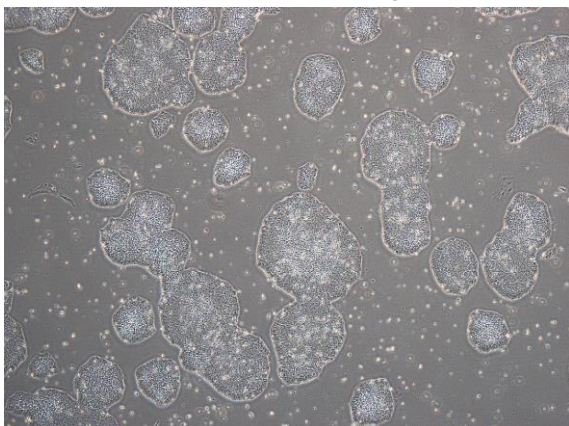
CiRA-j-1053-C: passage-2



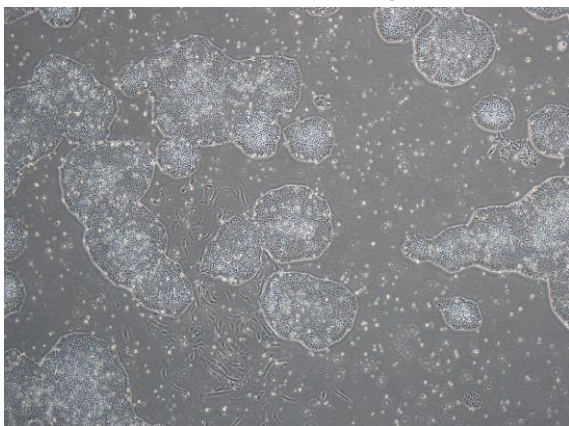
CiRA-j-1053-D: passage-2



CiRA-j-1053-E: passage-2



CiRA-j-1053-F: passage-2



(All images were captured at 4x magnification)